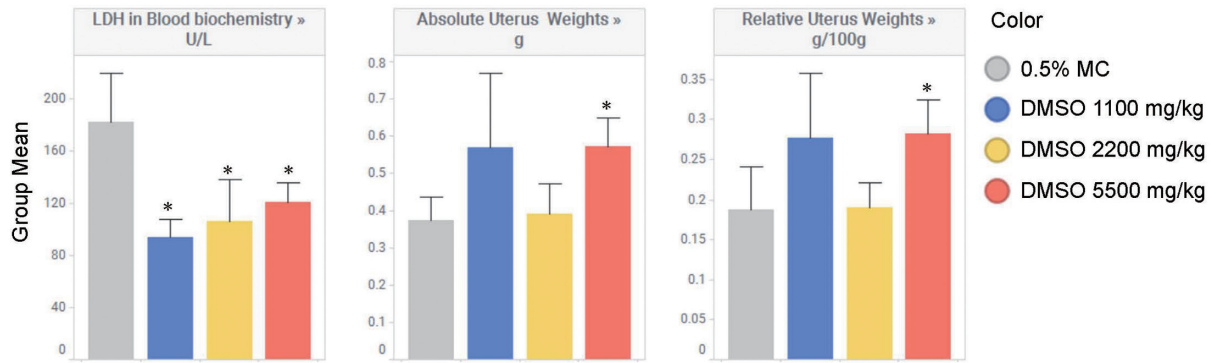


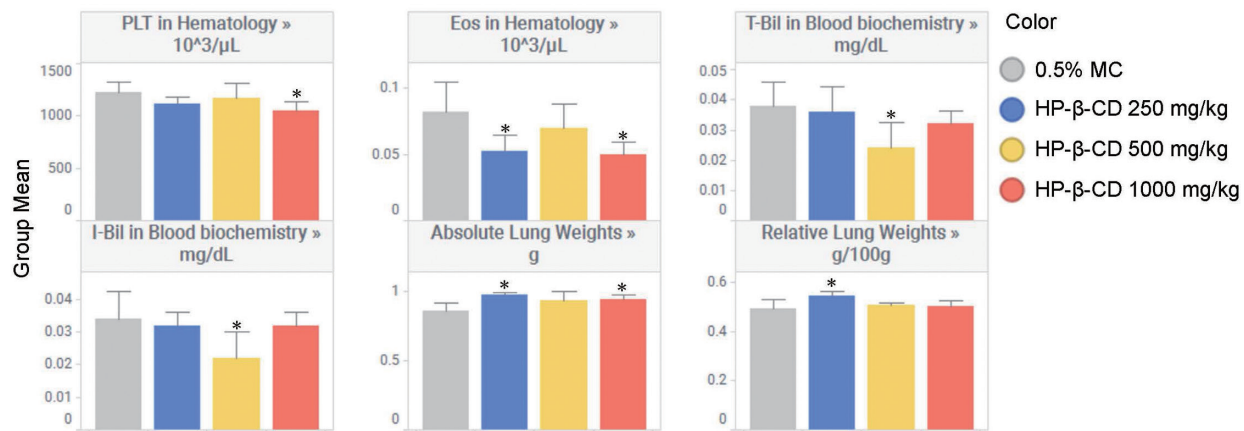
**Supplemental Figure 1.** Urinalysis and blood biochemistry in PEG 400 groups. Values represent group mean  $\pm$  SD. n = 5. The asterisk (\*) indicates a statistically significant difference from the 0.5% MC group (\*: p < 0.05).



**Supplemental Figure 2.** Blood biochemistry and organ weights in DMSO groups. Values represent group mean  $\pm$  SD.  $n = 5$ . The asterisk (\*) indicates a statistically significant difference from the 0.5% MC group (\*:  $p < 0.05$ ).

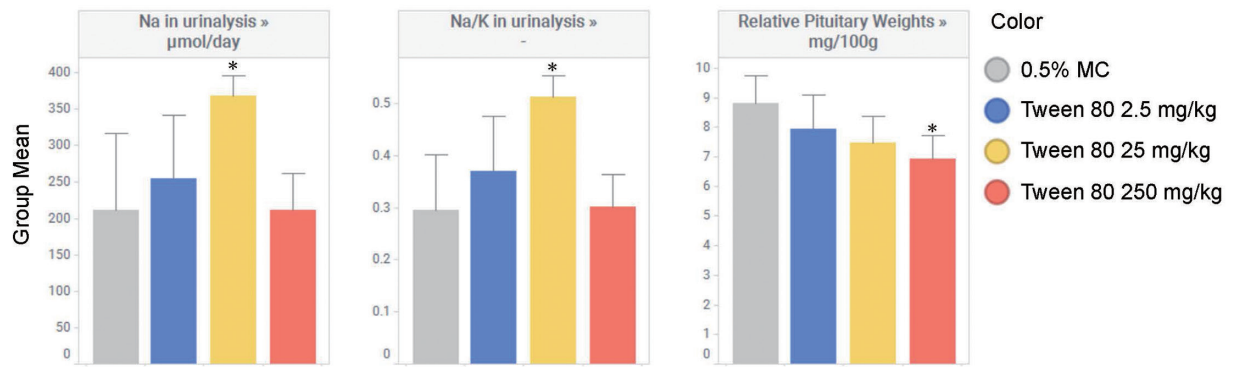


**Supplemental Figure 3.** Body weights and body weight gains in HP-β-CD groups. Values represent group mean ± SD. n = 5. The asterisk (\*) indicates a statistically significant difference from the 0.5% MC group (\*: p < 0.05).

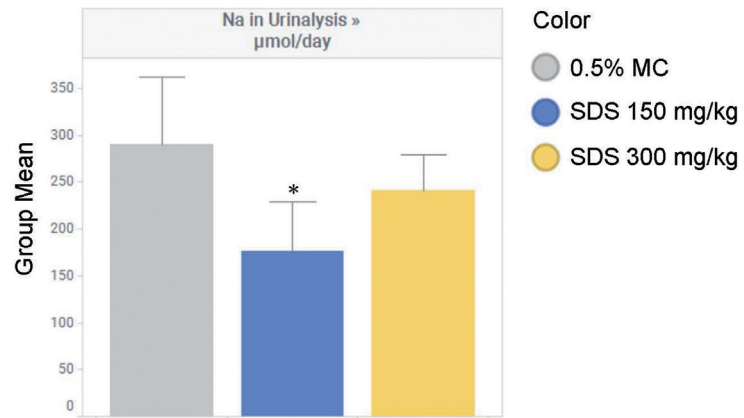


**Supplemental Figure 4.** Hematology, blood biochemistry, and organ weights in HP-β-CD groups.

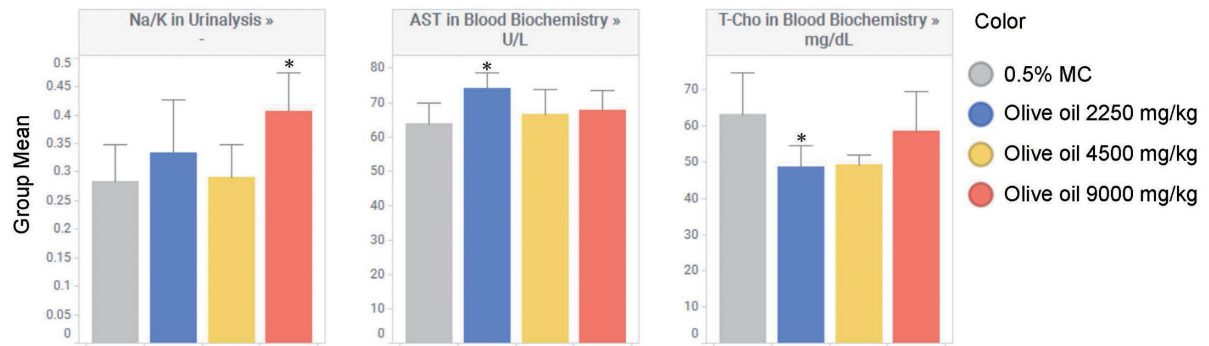
Values represent group mean ± SD. n = 5. The asterisk (\*) indicates a statistically significant difference from the 0.5% MC group (\*: p < 0.05).



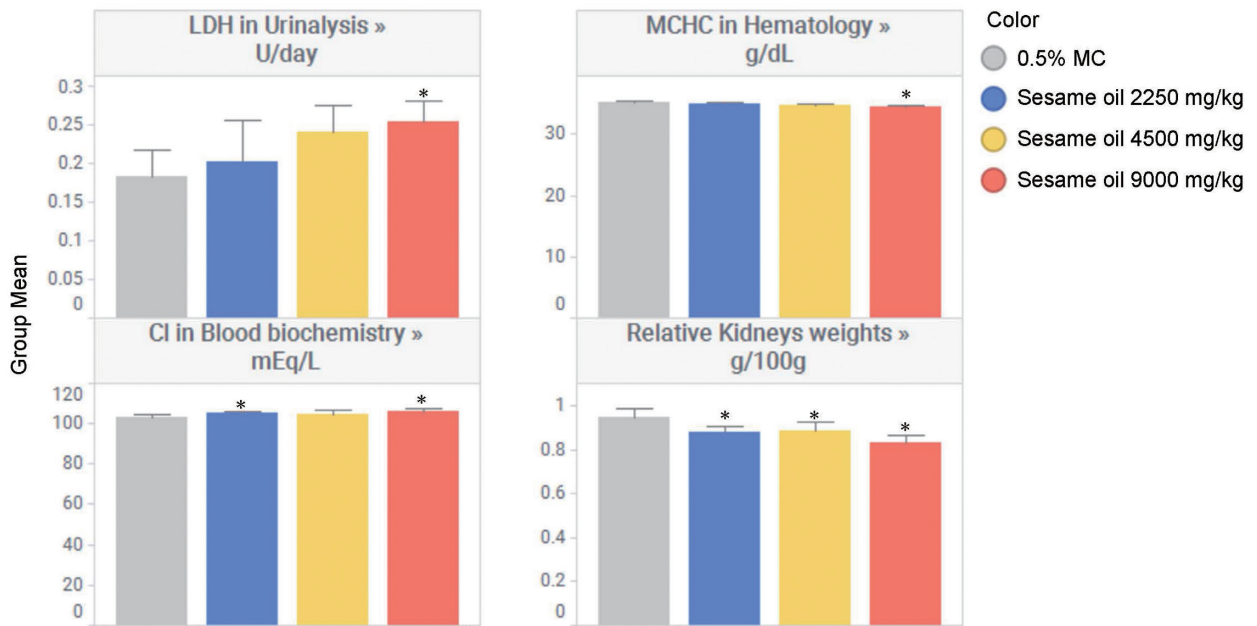
**Supplemental Figure 5.** Urinalysis and organ weights in Tween 80 groups. Values represent group mean  $\pm$  SD. n = 5. The asterisk (\*) indicates a statistically significant difference from the 0.5% MC group (\*: p < 0.05).



**Supplemental Figure 6.** Urinalysis in SDS groups. Values represent group mean  $\pm$  SD. n = 5. The asterisk (\*) indicates a statistically significant difference from the 0.5% MC group (\*: p < 0.05).



**Supplemental Figure 7.** Urinalysis and blood biochemistry in olive oil groups. Values represent group mean  $\pm$  SD. n = 5. The asterisk (\*) indicates a statistically significant difference from the 0.5% MC group (\*: p < 0.05).



**Supplemental Figure 8.** Urinalysis, hematology, blood biochemistry and organ weights in sesame oil groups.

Values represent group mean  $\pm$  SD. n = 5. The asterisk (\*) indicates a statistically significant difference from the 0.5% MC group (\*: p < 0.05).