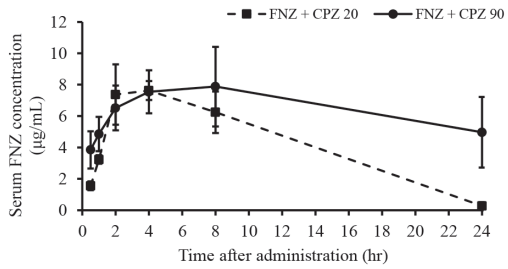
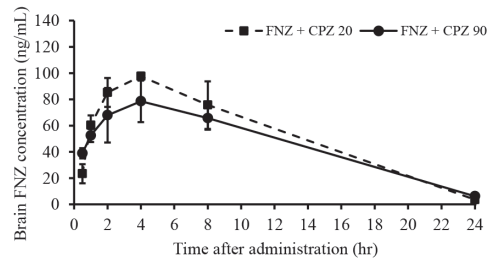


A)



B)



**Supplemental Fig. 1.** Concentration of FNZ in serum and brain extracellular fluid. Changes in FNZ concentrations in serum (A) and brain (B) after administration of CPZ (20 or 90 mg/kg) and FNZ (200 mg/kg) are illustrated. Values represent the mean  $\pm$  SE. [A, B: CPZ (20 mg/kg) and FNZ combination, n=4; A: CPZ (90 mg/kg) and FNZ combination, n=8, except 24 hr (n=6); B: CPZ (90 mg/kg) and FNZ combination, n=3, except 24 hr (n=2).]